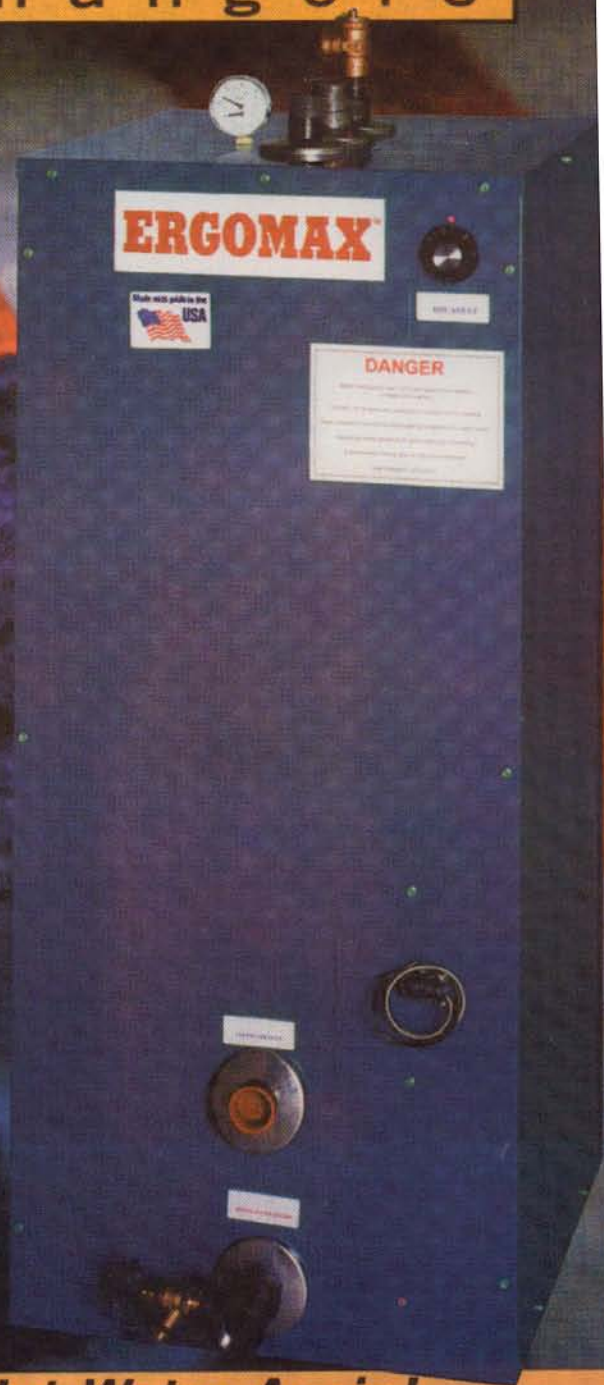


ERGOMAX[®]

Heat Exchangers

Since 1992, our
heat exchangers
have set the standard
in hot water production
in homes and businesses nationwide...

- ▶ 99% Heat Transfer Efficiency Saves Energy
- ▶ Double-Wall Exempt
- ▶ Output up to 1800 gph per unit
- ▶ Output Temperature up to 190°F
- ▶ Instantaneous - No "Recovery" Needed
- ▶ Prevents bacterial Growth
- ▶ Buffers Low-Mass, High Performance Boilers
- ▶ Fits through doorways and in elevators
- ▶ Requires No Maintenance
- ▶ Lowest Lifetime Operating Costs
- ▶ Transferable Lifetime Residential Warranty
- ▶ Industry's Best Commercial Warranty



Never Run Out of Hot Water Again!

ERGOMAX[®]

The **only unit** that can heat domestic water, buffer boilers,
provide heat for your house (baseboard & radiant)
and do it all at the same time!

GROUP THERMO Incorporated

Tel: 908-757-8955 • Fax: 908-757-1153

www.ergomax.com info@ergomax.com

ERGOMAX

Heat Exchangers Deliver High Performance, Maximum Energy Savings



For the homeowner...

Regardless of the size of your home, an ERGOMAX heat exchanger attached to your heating boiler will give you an instantaneous and continuous supply of hot water -- enough to run the dishwasher and clothes washer, give the kids a bath and still be able to fill your spa tub or take a hot shower.



For the business owner...

Whether you operate a restaurant and need 180°F dishwashing water, manage apartment buildings or a hotel, installing ERGOMAX heat exchangers means sparkling clean table settings and an end to complaints about not enough hot water from the tenants or overnight guests. Anywhere high volumes of hot water and/or high temperatures are needed -- schools, hospitals, nursing homes, health clubs, sports centers or laundries -- there is an ERGOMAX model to fit your needs. And, the energy savings combined with lower long-term capital expenditures add up to a rapid payback to increase your bottom line.



For the contractor and specifying engineer...

By specifying ERGOMAX heat exchangers, you are confident your clients will be getting a product incorporating a state-of-the-art design, made with high quality materials which will deliver superb performance for many years. And, since every ERGOMAX model is designed to fit through doorways and in freight elevators, many costs often associated with replacing or retrofitting large residential and commercial hot water systems are eliminated.

Stamped ERGOMAX units are available by special order when A.S.M.E. equipment is demanded.

ERGOMAX heat exchangers are exempt from double-wall requirements under BOCA, IAPMO and the UPC.

You'll never run out of hot water!

An ERGOMAX tank produces hot water for as long as it's needed, limited only by the size of your boiler.

With a storage tank, when 70% of its hot water is used, the incoming cold water has cooled the rest. During recovery (refilling and reheating), no hot water is available.

— ERGOMAX productivity
— Storage Tank productivity

ERGOMAX E109

Domestic hot water produced per hour in U.S. gallons†

| Net BTUH | First hour | | | Continuous | | |
|-----------|------------|-------|-------|------------|-------|-------|
| | 110°F | 140°F | 180°F | 110°F | 140°F | 180°F |
| 400 000 | 807 | 531 | 363 | 687 | 483 | 346 |
| 500 000 | 979 | 651 | 450 | 859 | 603 | 433 |
| 600 000 | 1151 | 772 | 536 | 1031 | 724 | 519 |
| 700 000 | 1323 | 893 | 622 | 1202 | 845 | 606 |
| 800 000 | 1494 | 1014 | | 1374 | 965 | |
| 900 000 | 1666 | 1074 | | 1546 | 1026 | |
| 1 050 000 | 1864 | | | 1804 | | |

ERGOMAX E65

Domestic hot water produced per hour in U.S. gallons†

| Net BTUH | First hour | | | Continuous | | |
|----------|------------|-------|-------|------------|-------|-------|
| | 110°F | 140°F | 180°F | 110°F | 140°F | 180°F |
| 200 000 | 416 | 270 | 183 | 344 | 241 | 173 |
| 250 000 | 501 | 331 | 227 | 429 | 302 | 216 |
| 300 000 | 587 | 391 | 270 | 515 | 362 | 260 |
| 350 000 | 673 | 451 | 309 | 601 | 422 | 300 |
| 400 000 | 759 | 512 | 352 | 687 | 483 | 343 |
| 450 000 | 845 | 572 | | 773 | 543 | |
| 500 000 | 931 | | | 859 | | |
| 600 000 | 1056 | | | 1020 | | |

ERGOMAX E45

Domestic hot water produced per hour in U.S. gallons†

| Net BTUH | First hour | | | Continuous | | |
|----------|------------|-------|-------|------------|-------|-------|
| | 110°F | 140°F | 180°F | 110°F | 140°F | 180°F |
| 200 000 | 392 | 261 | 180 | 344 | 241 | 173 |
| 250 000 | 477 | 321 | 223 | 429 | 302 | 216 |
| 300 000 | 563 | 381 | 266 | 515 | 362 | 260 |
| 350 000 | 649 | 442 | 300 | 601 | 422 | 292 |
| 400 000 | 735 | 502 | | 687 | 483 | |
| 450 000 | 821 | 562 | | 773 | 543 | |
| 500 000 | 946 | 907 | | 859 | | |

ERGOMAX E44

Domestic hot water produced per hour in U.S. gallons†

| Net BTUH | First hour | | | Continuous | | |
|----------|------------|-------|-------|------------|-------|-------|
| | 110°F | 140°F | 180°F | 110°F | 140°F | 180°F |
| 150 000 | 306 | 200 | 137 | 258 | 181 | 130 |
| 200 000 | 392 | 261 | 180 | 344 | 241 | 173 |
| 250 000 | 477 | 321 | 223 | 429 | 302 | 216 |
| 300 000 | 563 | 381 | 266 | 515 | 362 | 260 |
| 350 000 | 649 | 442 | | 601 | 422 | |
| 400 000 | 735 | | | 687 | | |
| 450 000 | 797 | | | 773 | | |

ERGOMAX E24

Domestic hot water produced per hour in U.S. gallons†

| Net BTUH | First hour | | | Continuous | | |
|----------|------------|-------|-------|------------|-------|-------|
| | 110°F | 140°F | 180°F | 110°F | 140°F | 180°F |
| 150 000 | 284 | 192 | 134 | 258 | 181 | 130 |
| 200 000 | 370 | 252 | 177 | 344 | 241 | 173 |
| 250 000 | 455 | 312 | 220 | 429 | 302 | 216 |
| 300 000 | 542 | 373 | | 515 | 362 | |
| 350 000 | 628 | 433 | | 601 | 422 | |
| 400 000 | 714 | | | 687 | | |

ERGOMAX E23

Domestic hot water produced per hour in U.S. gallons†

| Net BTUH | First hour | | Continuous | |
|----------|------------|-------|------------|-------|
| | 110°F | 140°F | 110°F | 140°F |
| 100 000 | 198 | 131 | 172 | 121 |
| 150 000 | 284 | 192 | 258 | 181 |
| 200 000 | 370 | 252 | 344 | 241 |
| 250 000 | 456 | 312 | 429 | 302 |
| 300 000 | 542 | | 515 | |

SPECIFICATIONS

| Model | Tank Volume (U.S. gal) | Heat Transfer Area (sq.ft.) | Domestic Water Connections | Boiler Connections | Height* | Width* | Weight (lbs) |
|-------|------------------------|-----------------------------|----------------------------|--------------------|---------|--------|--------------|
| E109 | 119 | 58.9 | 2" sweat | 2" NPT | 60" | 30.5" | 625 |
| E65 | 72 | 32.7 | 1 1/2" sweat | 1 1/2" NPT | 49" | 26.5" | 385 |
| E45 | 48 | 32.7 | 1 1/2" sweat | 1 1/4" NPT | 45" | 24.5" | 265 |
| E44 | 48 | 26.2 | 1 1/2" sweat | 1 1/4" NPT | 45" | 24.5" | 235 |
| E24 | 26 | 26.2 | 1 1/4" sweat | 1" NPT | 42" | 19.5" | 200 |
| E23 | 26 | 19.6 | 1 1/4" sweat | 1" NPT | 42" | 19.5" | 170 |

† Based on ASHRAE (D.O.E.) Test method with 40°F domestic water and boiler water at 180°F. (Boiler water must be 200°F to obtain 180°F output volumes.) R Factor=15. Standby loss<1/2°F per hour. * Add four inches to basic tank dimensions to allow for utility (DHW) and boiler connections.

STANDARD EQUIPMENT



In residential use, ERGOMAX units are covered by a Limited Lifetime Warranty transferable to a second owner within the first 10 years. Commercial units are covered by a 10 Year Warranty - 100% in Years 1-5, prorated 20% in each of Years 6-10.

Copyright 1998 Group Thermo Incorporated. All rights reserved. ERGOMAX is a trademark of Group Thermo Incorporated. Group Thermo Incorporated reserves the right to modify at any time and without notice colors, components, materials, specifications or models described in or shown in this brochure.

GROUP THERMO INCORPORATED

Phone: 908-757-8955 Fax: 908-757-1153

Email: info@ergomax.com

Visit us at www.ergomax.com

Distributed by: